



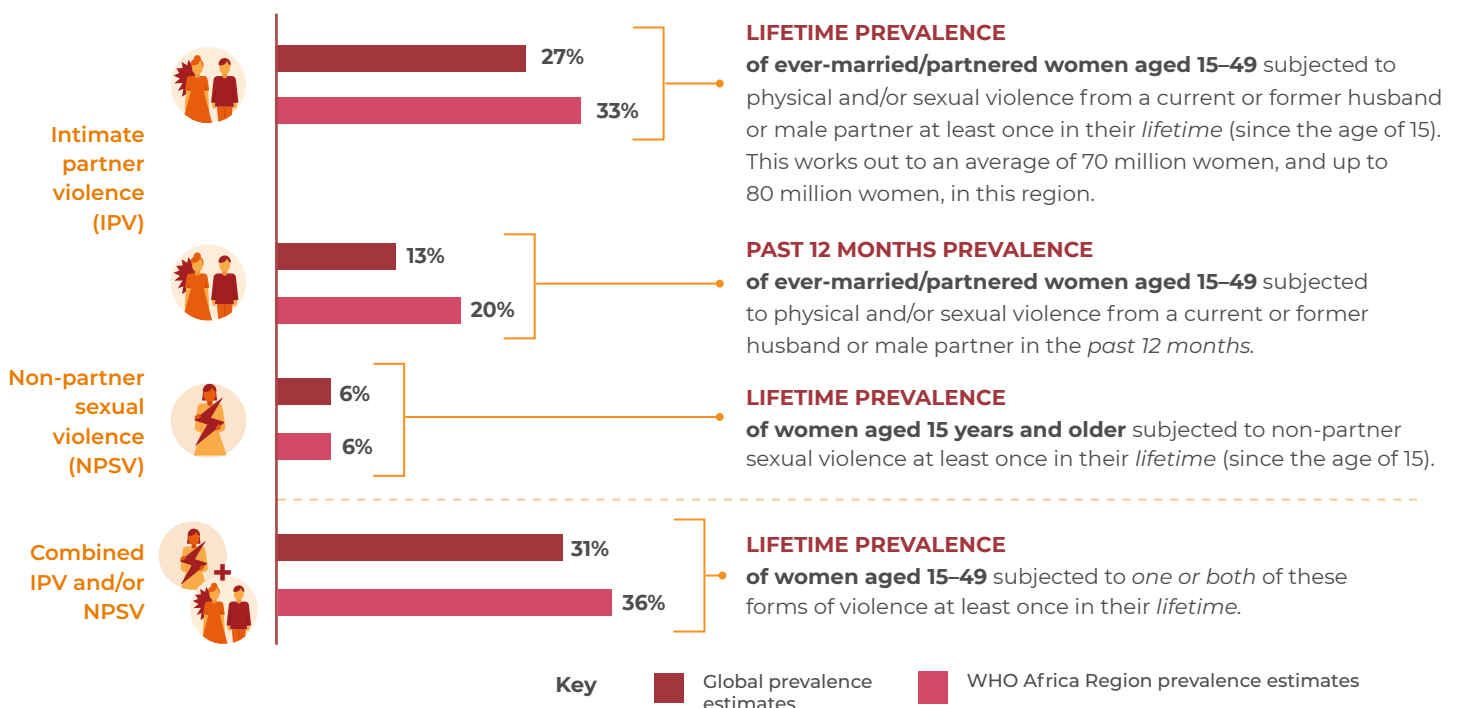
VIOLENCE AGAINST WOMEN PREVALENCE ESTIMATES, 2018



“ **Violence against women is a global public health crisis of pandemic proportions. It has serious social and economic consequences for countries and societies.** ”

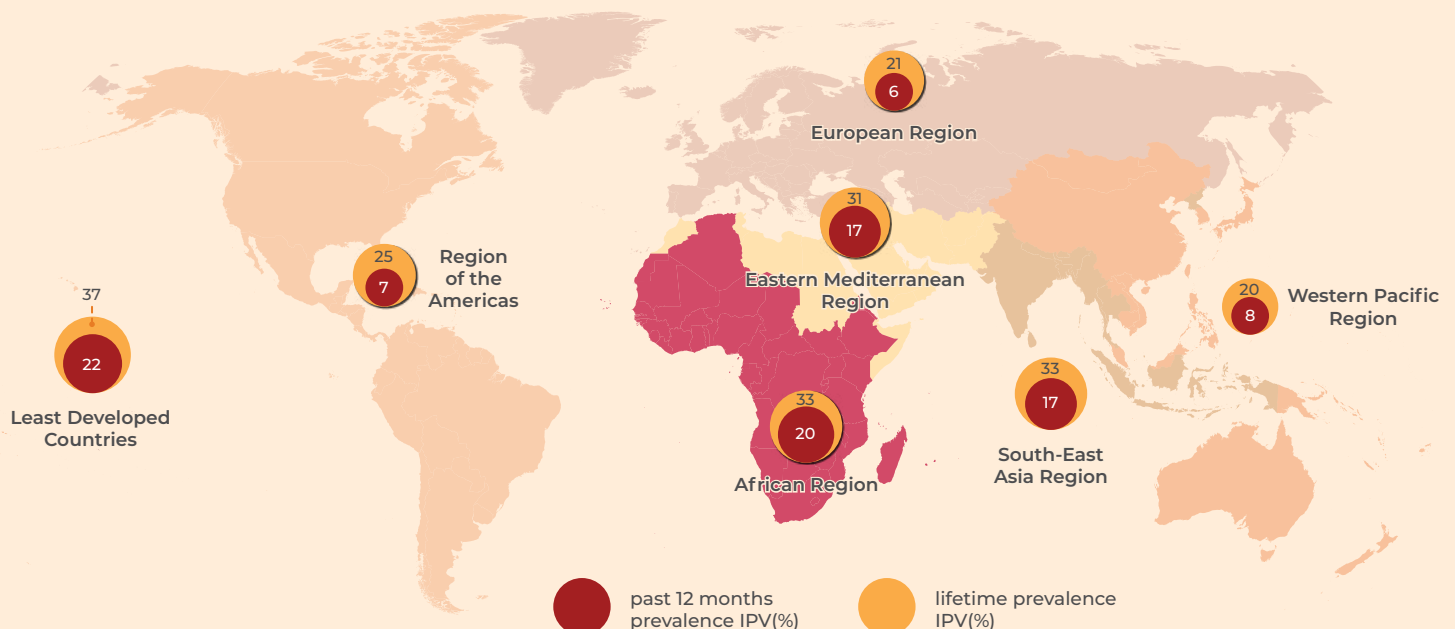
This fact sheet highlights the need for governments to reinforce the commitments made to eliminate all forms of violence against women and girls (Sustainable Development Goal 5, target 5.2).

2018 GLOBAL AND AFRICAN REGION INTIMATE PARTNER VIOLENCE AND NON-PARTNER SEXUAL VIOLENCE ESTIMATES



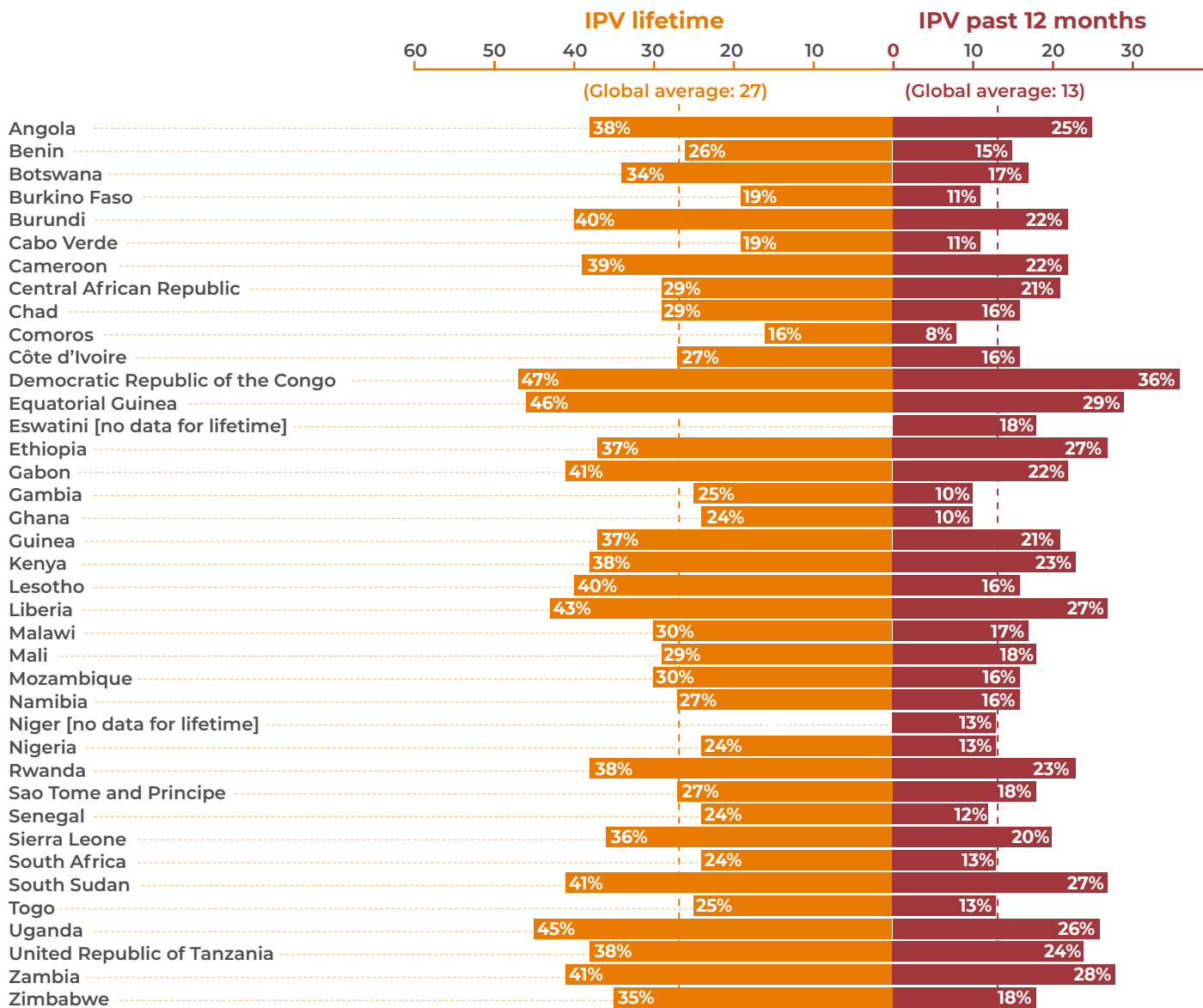
REGIONAL PREVALENCE ESTIMATES OF INTIMATE PARTNER VIOLENCE

This map shows global and regional (by WHO region) prevalence estimates of lifetime and past 12 months physical and/or sexual intimate partner violence (IPV) among ever-married/partnered women aged 15–49. The WHO African Region is highlighted.



COUNTRY PREVALENCE ESTIMATES OF INTIMATE PARTNER VIOLENCE (IPV)

This chart shows country prevalence estimates of lifetime and past 12 months IPV among ever-married/partnered women aged 15–49 in countries of the WHO African Region.^a



^a There are a total of 47 Member States in the region.

URGENT ACTION IS NEEDED



Policy and laws – Institute and implement laws and regulations that promote gender equality (e.g. girls' and women's equitable access to secondary education, paid employment and property/ inheritance rights, as well as laws to address violence against women).



Data – Strengthen data collection, reporting and use. Invest in high-quality surveys on violence against women and improve measurement of the different forms of violence that women are subjected to.



Prevention – Support and scale up nationalized and localized evidence-driven programmes and strategies for prevention. Promote and support community-based and women's organizations' efforts to end violence against women.



Services – Scale up comprehensive, accessible and quality survivor-centred services for women affected by violence and their children through capacity-building of service providers in all sectors (health, judicial, education, social), including in humanitarian crises. Strengthen joined-up multisectoral responses to better respond to and prevent violence against women.



Support – Empower and invest in autonomous women's rights organizations to apply their expertise in addressing violence against women and guide decision-making in programming and policy-making.



Society – Challenge norms and attitudes that discriminate against women and girls, especially regarding the acceptability of violence against women, including through school- and community-based programmes and interventions.



Download the full report [here](#).

For more information contact vavestimates@who.int



WHO/SRH/21.7 © World Health Organization 2021. Some rights reserved. This work is available under the CC BY-NC-SA 3.0 IGO licence.

This report was produced by the WHO Department of Sexual and Reproductive Health and Research (SRH), including HRP, for the United Nations Inter-Agency Working Group on Violence Against Women Estimation and Data (VAW-IAWGED).